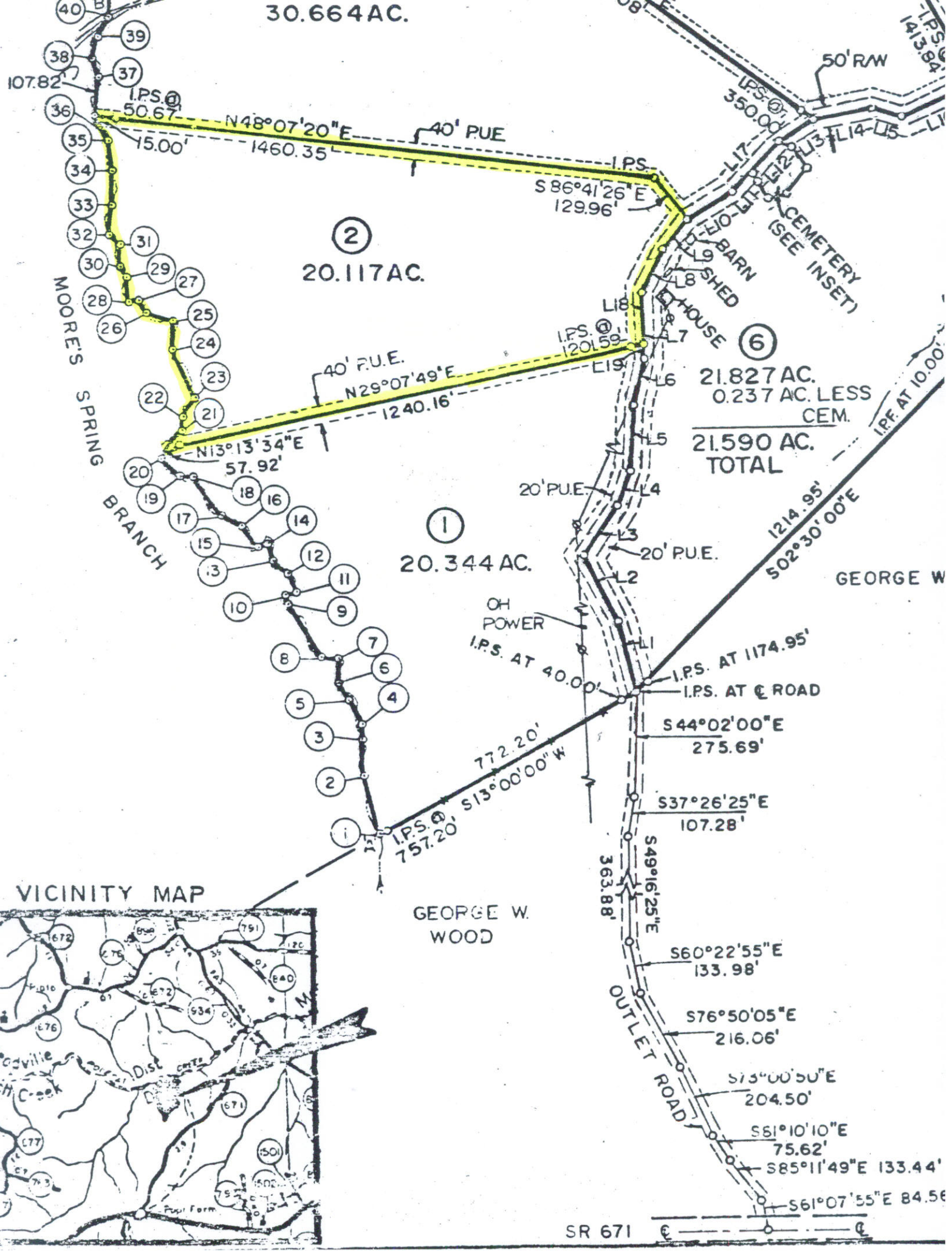


30.664 AC.



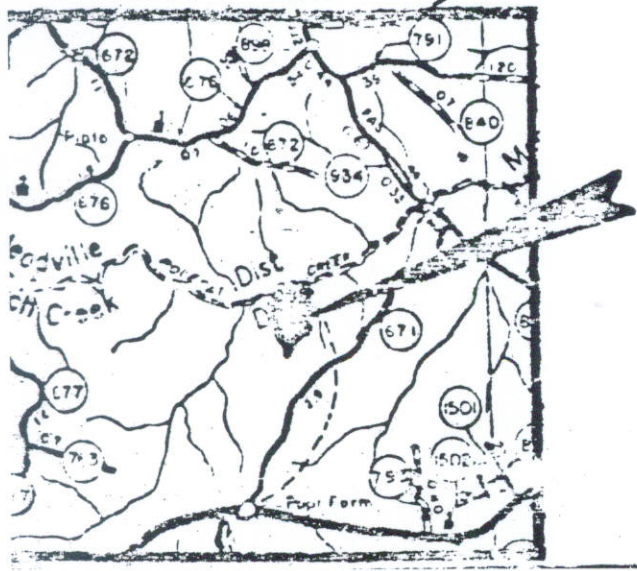
MOORE'S SPRING BRANCH

BARN
SHED
HOUSE
CEMETERY (SEE INSET)

GEORGE W WOOD

OUTLET ROAD

VICINITY MAP



SR 671

21.827 AC.
0.237 AC. LESS
CEM.
**21.590 AC.
TOTAL**

20.344 AC.

20.117 AC.

21.827 AC.

21.590 AC.
TOTAL

- 40
- 39
- 38
- 37
- 36
- 35
- 34
- 33
- 32
- 31
- 30
- 29
- 28
- 27
- 26
- 25
- 24
- 23
- 22
- 21
- 20
- 19
- 18
- 17
- 16
- 15
- 14
- 13
- 12
- 11
- 10
- 9
- 8
- 7
- 6
- 5
- 4
- 3
- 2
- 1

- L1
- L2
- L3
- L4
- L5
- L6
- L7
- L8
- L9
- L10
- L11
- L12
- L13
- L14
- L15
- L16
- L17
- L18
- L19

OH POWER

I.P.S. AT 40.00'

I.P.S. AT 1174.95'
I.P.S. AT ROAD

I.P.S. @ 757.20'

I.P.S. @ 1201.59'

I.P.S. @ 50.67'

I.P.S. @ 350.00'

I.P.S. @ 1413.84'

50' RW

40' P.U.E.

15.00'

N48°07'20"E
1460.35'

S86°41'26"E
129.96'

40' P.U.E.
N29°07'49"E
1240.16'

N13°13'34"E
57.92'

20' P.U.E.

20' P.U.E.

1214.95'
502°30'00"E

772.20'
S13°00'00"W

S44°02'00"E
275.69'

S37°26'25"E
107.28'

363.88'

S49°16'25"E

S60°22'55"E
133.98'

S76°50'05"E
216.06'

S75°00'50"E
204.50'

S81°10'10"E
75.62'

S85°11'49"E 133.44'

S61°07'55"E 84.56'