

THIS PLAT IS BASED ON A CURRENT FIELD SURVEY

GPIN NO. 3501-22-6947

REFERENCE PLAT: M.B.40 P.82

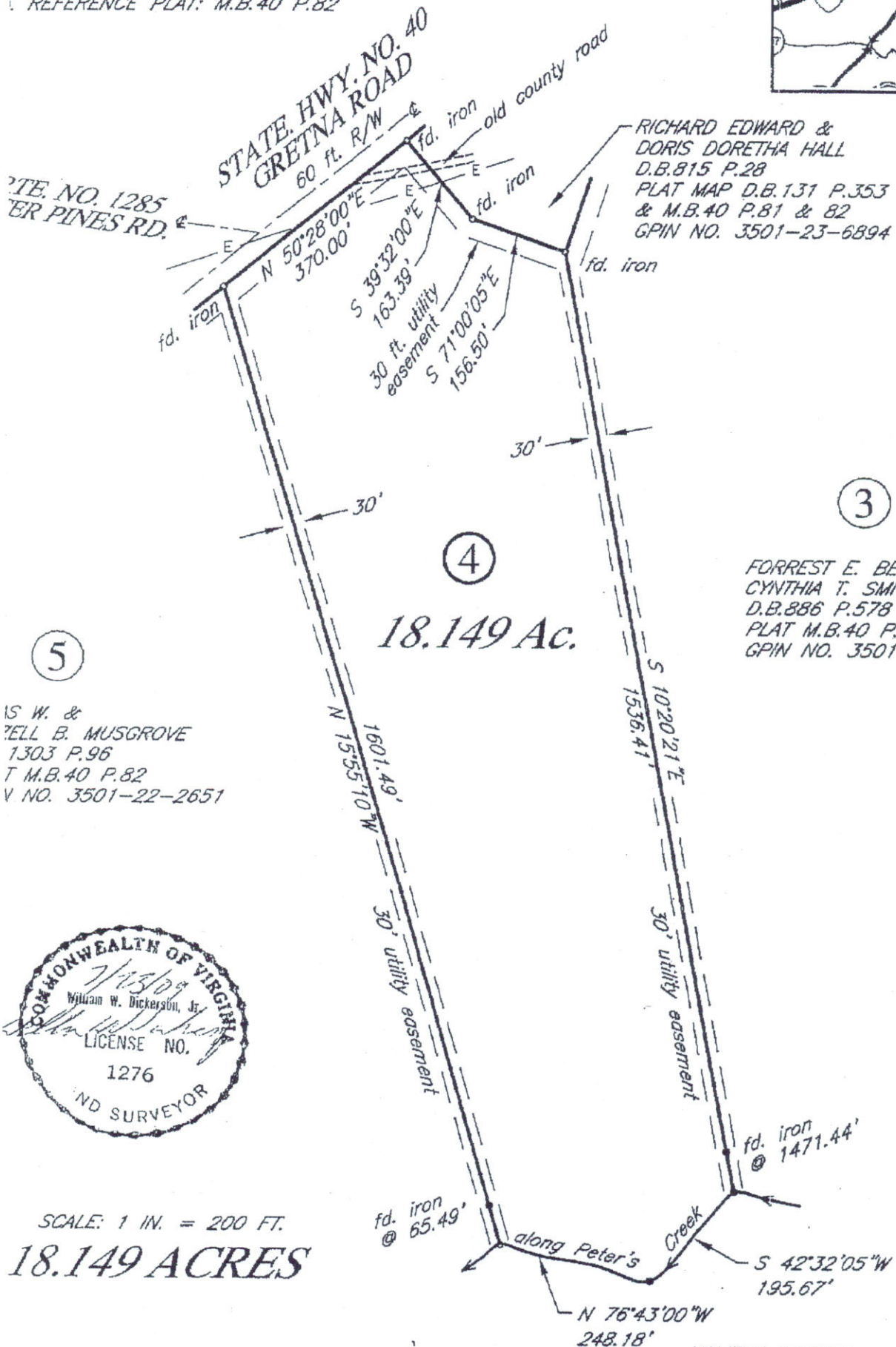
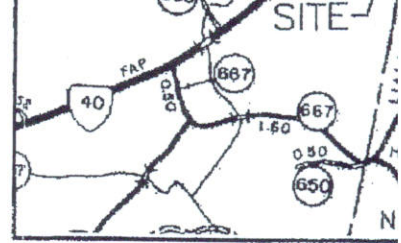


PLATE NO. 1285
PINES RD.

STATE HWY. NO. 40
GREटना ROAD
60 ft. R/W

RICHARD EDWARD &
DORIS DORETHA HALL
D.B.815 P.28
PLAT MAP D.B.131 P.353
& M.B.40 P.81 & 82
GPIN NO. 3501-23-6894



M.B.40 P.82

3

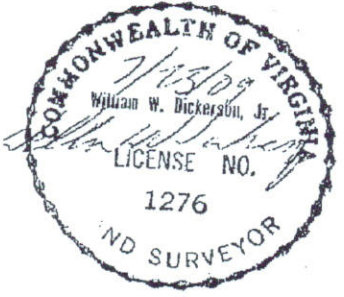
4

18.149 Ac.

FORREST E. BENFORD &
CYNTHIA T. SMITH
D.B.886 P.578
PLAT M.B.40 P.82
GPIN NO. 3501-33-0086

5

IS W. &
TELL B. MUSGROVE
1303 P.96
T M.B.40 P.82
V NO. 3501-22-2651



SCALE: 1 IN. = 200 FT.
18.149 ACRES

HALIFAX COUNTY:
HERBERT or PEGGY A. CLAY
D.B.981 P.575